

# FISSAGGI SCALDASALVIETTE

Le mensole in resina termoplastica, regolabili in profondità, degli scaldasalviette BREM con attacchi di serie, comprese nell'imballaggio sono:  
 - n° 2 per dimensioni fino a 155 cm  
 - n° 4 per altezze o lunghezze superiori

- posizione mensola con attacchi di serie
- posizione mensola con attacchi a richiesta (richiedere mensole aggiuntive).

Per la posa applicare al muro le mensole in dotazione.  
 Il fondello della mensola ha il foro ovale per la regolazione sul muro.

M8 per tutti gli Scaldasalviette tranne:

M4 per Kore e Vinci

M4F con fondello inclinato per Start Curvo e Thun

M4S per Alcova, Eye, Pit  
 M8S: Ega, K-Crom, K-Cor  
 Cross e Quar

Art. EOS..  
 (S-Platt, Clak, Egon, Open)

Art. 131  
 (Lame - Slim Lamath)



Mensola bianca per scaldasalviette bianchi, (prof. 8 cm):  
 Art. M8B 11,70€  
 Ega, K-Cor, Quar, Cross Art. M8SB 11,70€

Mensola cromata per scaldasalviette colorati (prof. 8 cm):  
 Art. M8C 18,20€  
 Cross, Ega, Essen, Quar Art. M8SC 18,20€

Mensola bianca per scaldasalviette bianchi, (prof. 4 cm):  
 Art. M4B 9,90€  
 Alcova, Eye, Paco, Thun Art. M4SB 9,90€  
 Art. M4FB 12,40€

Mensola cromata per scaldasalviette colorati Art. M4 (prof. 4 cm):  
 Art. M4C 16,40€  
 Alcova, Eye, Paco, Thun Art. M4SC 16,40€  
 Art. M4FC 20,00€

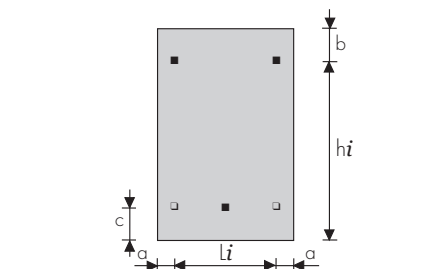
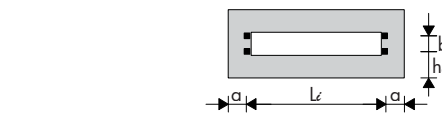
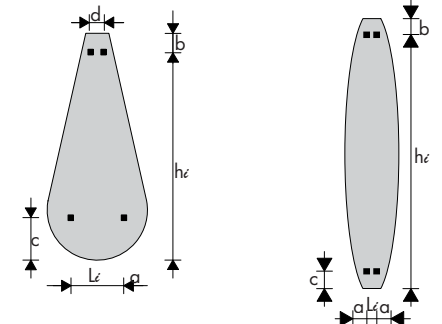
| Mod. ALCOVA (n°4 M4S) |        |     | hi    | Li   |
|-----------------------|--------|-----|-------|------|
|                       |        |     | mm    | mm   |
| ALCOVA                | 100-20 | 141 | 1080  | 380  |
| ALCOVA                | 100-26 | 141 | 1080  | 380  |
| ALCOVA                | 145-20 | 148 | 1420  | 452  |
| ALCOVA                | 145-26 | 148 | 1420  | 452  |
| ALCOVA                | 185-20 | 204 | 1830  | 599  |
| ALCOVA                | 185-26 | 204 | 1830  | 599  |
| ALCOVA                | 185-40 | 204 | 1840  | 599  |
|                       |        |     | a=275 | b=74 |

| Mod. CLARK (n°4 EOS) |        |  | hi    | Li    |
|----------------------|--------|--|-------|-------|
|                      |        |  | mm    | mm    |
| CLARK                | 80-27  |  | 690   | 77    |
| CLARK                | 80-44  |  | 690   | 251   |
| CLARK                | 130-27 |  | 1190  | 77    |
| CLARK                | 130-44 |  | 1190  | 251   |
| CLARK                | 180-27 |  | 1690  | 77    |
| CLARK                | 180-44 |  | 1690  | 251   |
| CLARK                | 180-53 |  | 1690  | 338   |
|                      |        |  | c=110 | b=110 |

| Mod. DIVO |        |  | hi   | Li    |
|-----------|--------|--|------|-------|
|           |        |  | mm   | mm    |
| DIVO      | 125-30 |  | 1158 | 60    |
| DIVO      | 125-45 |  | 1158 | 60    |
| DIVO      | 170-35 |  | 1638 | 60    |
| DIVO      | 170-45 |  | 1638 | 60    |
|           |        |  | b=77 | c=230 |

| Mod. EGA (M4S) |        |  | hi   | Li   |
|----------------|--------|--|------|------|
|                |        |  | mm   | mm   |
| EGA            | 90-50  |  | 880  | 420  |
| EGA            | 90-60  |  | 880  | 420  |
| EGA            | 120-50 |  | 1186 | 320  |
| EGA            | 120-60 |  | 1186 | 420  |
| EGA            | 150-50 |  | 1492 | 320  |
| EGA            | 150-60 |  | 1492 | 420  |
| EGA            | 180-50 |  | 1798 | 320  |
| EGA            | 180-60 |  | 1798 | 420  |
| EGA            | 180-80 |  | 1798 | 620  |
|                |        |  | a=90 | b=38 |

| Mod. ESSEN (M8) |        |  | hi   | Li   |
|-----------------|--------|--|------|------|
|                 |        |  | mm   | mm   |
| ESSEN           | 72-40  |  | 640  | 320  |
| ESSEN           | 72-52  |  | 640  | 440  |
| ESSEN-PLUS      | 72-52  |  | 640  | 440  |
| ESSEN           | 72-130 |  | 640  | 00   |
| ESSEN-PLUS      | 72-130 |  | 640  | 00   |
| ESSEN           | 72-152 |  | 640  | 00   |
| ESSEN-PLUS      | 72-152 |  | 640  | 00   |
| ESSEN           | 104-52 |  | 960  | 440  |
| ESSEN           | 104-64 |  | 960  | 560  |
| ESSEN           | 136-52 |  | 1280 | 440  |
| ESSEN-PLUS      | 136-52 |  | 1280 | 440  |
| ESSEN           | 136-64 |  | 1280 | 560  |
| ESSEN-PLUS      | 136-64 |  | 1280 | 560  |
| ESSEN           | 168-40 |  | 1600 | 320  |
| ESSEN           | 168-52 |  | 1600 | 440  |
| ESSEN-PLUS      | 168-52 |  | 1600 | 440  |
| ESSEN           | 168-64 |  | 1600 | 560  |
| ESSEN           | 200-40 |  | 1920 | 320  |
| ESSEN           | 200-52 |  | 1920 | 440  |
| ESSEN           | 200-64 |  | 1920 | 560  |
| ESSEN           | 200-76 |  | 1920 | 680  |
|                 |        |  | a=40 | b=80 |



| Mod. HERG-ÖT |        |  | hi   | Li   |
|--------------|--------|--|------|------|
|              |        |  | mm   | mm   |
| HERG ÖT      | 184-42 |  | 1810 | 400  |
| HERG ÖT      | 184-50 |  | 1810 | 480  |
| HERG ÖT      | 184-58 |  | 1810 | 560  |
| HERG ÖT      | 216-42 |  | 2130 | 400  |
| HERG ÖT      | 216-50 |  | 2130 | 480  |
| HERG ÖT      | 216-58 |  | 2130 | 560  |
| HERG ÖT      | 248-42 |  | 2450 | 400  |
| HERG ÖT      | 248-50 |  | 2450 | 480  |
| HERG ÖT      | 248-58 |  | 2450 | 560  |
|              |        |  | a=10 | b=30 |

| Mod. HOOK |        |  | hi   | Li   |
|-----------|--------|--|------|------|
|           |        |  | mm   | mm   |
| HOOK      | 180-10 |  | 1720 | 40   |
| HOOK      | 180-20 |  | 1720 | 120  |
| HOOK      | 180-30 |  | 1720 | 220  |
| HOOK      | 210-10 |  | 2020 | 40   |
| HOOK      | 210-20 |  | 2020 | 120  |
| HOOK      | 210-30 |  | 2020 | 220  |
| HOOK-2    | 180-20 |  | 1720 | 160  |
| HOOK-2    | 210-20 |  | 2020 | 160  |
| HOOK-2    | 180-30 |  | 1720 | 260  |
| HOOK-2    | 210-30 |  | 2020 | 260  |
|           |        |  | a=40 | b=80 |

| Mod. EYE (n°4 M4S) |        |  | hi   | Li   |
|--------------------|--------|--|------|------|
|                    |        |  | mm   | mm   |
| EYE                | 180-16 |  | 1770 | 50   |
| EYE                | 180-20 |  | 1770 | 50   |
| EYE                | 180-24 |  | 1770 | 50   |
|                    |        |  | a=85 | b=10 |

| Mod. FREE |        |  | hi   | Li   |
|-----------|--------|--|------|------|
|           |        |  | mm   | mm   |
| FREE      | 24-64  |  | 90   | 500  |
| FREE      | 24-84  |  | 90   | 700  |
| FREE      | 24-104 |  | 90   | 900  |
| FREE      | 24-124 |  | 90   | 1300 |
| FREE      | 24-144 |  | 90   |      |
|           |        |  | a=70 | b=10 |

| Mod. KORE-COR e CROM |        |  | hi   | Li   |
|----------------------|--------|--|------|------|
|                      |        |  | mm   | mm   |
| K-...                | 55-55  |  | 504  | 468  |
| K-...                | 55-80  |  | 504  | 718  |
| K-...                | 80-55  |  | 754  | 468  |
| K-...                | 80-80  |  | 754  | 718  |
| K-...                | 120-32 |  | 1134 | 248  |
| K-...                | 120-55 |  | 1134 | 468  |
| K-...                | 180-32 |  | 1764 | 248  |
| K-...                | 180-55 |  | 1764 | 468  |
|                      |        |  | a=36 | b=36 |

| Mod. KORE |        |  | hi   | Li    |
|-----------|--------|--|------|-------|
|           |        |  | mm   | mm    |
| KORE      | 55-55  |  | 393  | 350   |
| KORE      | 55-80  |  | 393  | 600   |
| KORE      | 80-55  |  | 643  | 350   |
| KORE      | 80-80  |  | 643  | 600   |
| KORE      | 120-32 |  | 1023 | 130   |
| KORE      | 120-55 |  | 1023 | 350   |
| KORE      | 180-32 |  | 1653 | 130   |
| KORE      | 180-55 |  | 1653 | 350   |
| KORE      | 180-65 |  | 1653 | 450   |
| KORE      | 180-80 |  | 1653 | 600   |
|           |        |  | a=95 | b=147 |

| Mod. KUAD |        |  | hi   | Li   |
|-----------|--------|--|------|------|
|           |        |  | mm   | mm   |
| KUAD      | 75-45  |  | 697  | 370  |
| KUAD      | 75-50  |  | 697  | 420  |
| KUAD      | 75-55  |  | 697  | 470  |
| KUAD      | 75-75  |  | 697  | 670  |
| KUAD      | 112-45 |  | 1072 | 370  |
| KUAD      | 112-50 |  | 1072 | 420  |
| KUAD      | 112-55 |  | 1072 | 470  |
| KUAD      | 112-60 |  | 1072 | 520  |
| KUAD      | 150-35 |  | 1447 | 270  |
| KUAD      | 150-45 |  | 1447 | 370  |
| KUAD      | 150-50 |  | 1447 | 420  |
| KUAD      | 150-55 |  | 1447 | 470  |
| KUAD      | 150-60 |  | 1447 | 520  |
| KUAD      | 175-35 |  | 1697 | 270  |
| KUAD      | 175-45 |  | 1697 | 370  |
| KUAD      | 175-50 |  | 1697 | 420  |
| KUAD      | 175-55 |  | 1697 | 470  |
| KUAD      | 175-60 |  | 1697 | 520  |
| KUAD      | 175-75 |  | 1697 | 670  |
|           |        |  | a=40 | b=53 |

| Mod. LAMATH |       | hi   | d   |
|-------------|-------|------|-----|
|             |       | mm   | mm  |
| LAMATH      | 190-2 | 1480 | 350 |
| LAMATH      | 190-3 | 1480 | 350 |
| LAMATH      | 190-4 | 1480 | 410 |
| LAMATH      | 210-2 | 1680 | 350 |
| LAMATH      | 210-3 | 1680 | 350 |
| LAMATH      | 210-4 | 1680 | 410 |

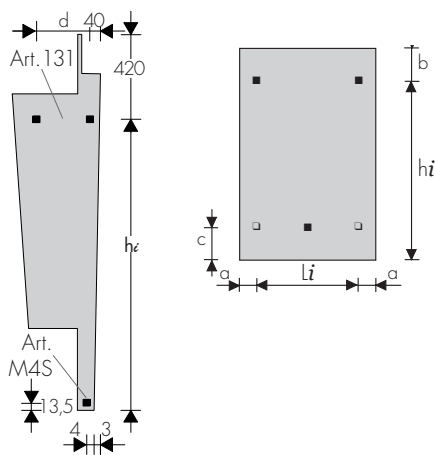
| Mod. MAHN |        | hi   | Li   |
|-----------|--------|------|------|
|           |        | mm   | mm   |
| MAHN      | 70-50  | 629  | 320  |
| MAHN      | 90-50  | 839  | 320  |
| MAHN      | 90-60  | 839  | 420  |
| MAHN      | 120-50 | 1114 | 320  |
| MAHN      | 120-60 | 1114 | 420  |
| MAHN      | 150-28 | 1389 | 100  |
| MAHN      | 150-50 | 1389 | 320  |
| MAHN      | 150-60 | 1389 | 420  |
| MAHN      | 180-28 | 1719 | 100  |
| MAHN      | 180-50 | 1719 | 320  |
| MAHN      | 180-60 | 1719 | 420  |
| MAHN      | 180-75 | 1719 | 570  |
|           | a=90   | b=54 | c=69 |

| Mod. PIT (n°4 M4S) |        | hi   | Li  | c   |
|--------------------|--------|------|-----|-----|
|                    |        | mm   | mm  | mm  |
| PIT                | 99-48  | 913  | 400 | 77  |
| PIT                | 132-32 | 1243 | 240 | 407 |
| PIT                | 132-48 | 1243 | 400 | 407 |
| PIT                | 176-32 | 1683 | 480 | 517 |
| PIT                | 176-48 | 1683 | 480 | 517 |
| PIT                | 176-56 | 1683 | 480 | 517 |
|                    | a=40   | b=77 |     |     |

| Mod. PLATT/UNIPLATT |        | hi    | Li    |
|---------------------|--------|-------|-------|
|                     |        | mm    | mm    |
| PLATT               | 80-49  | 670   | 350   |
| PLATT               | 130-49 | 1170  | 350   |
| PLATT               | 130-63 | 1170  | 490   |
| PLATT               | 180-35 | 1670  | 210   |
| PLATT               | 180-49 | 1670  | 350   |
| PLATT               | 180-63 | 1670  | 490   |
|                     | a=70   | b=130 | c=130 |
| PLATT               | 84-50  | 775   | 380   |
| PLATT               | 133-50 | 1265  | 380   |
|                     | a=60   | b=65  | c=40  |

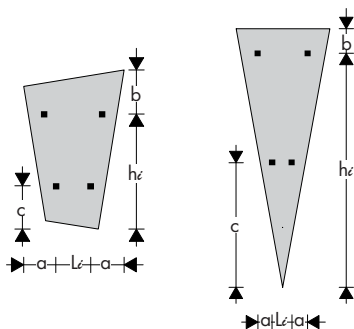
| Mod. PLUS12 |        | hi   | Li   |
|-------------|--------|------|------|
|             |        | mm   | mm   |
| PLUS12      | 90-40  | 840  | 300  |
| PLUS12      | 90-50  | 840  | 400  |
| PLUS12      | 120-40 | 1140 | 300  |
| PLUS12      | 120-50 | 1140 | 400  |
| PLUS12      | 150-40 | 1440 | 300  |
| PLUS12      | 150-50 | 1440 | 400  |
| PLUS12      | 150-60 | 1440 | 500  |
| PLUS12      | 180-40 | 1740 | 300  |
| PLUS12      | 180-50 | 1740 | 400  |
| PLUS12      | 180-60 | 1740 | 500  |
| PLUS12      | 180-75 | 1740 | 650  |
|             | a=50   | b=60 | c=60 |

| Mod. QUAR |        | hi   | Li   |
|-----------|--------|------|------|
|           |        | mm   | mm   |
| QUAR      | 90-46  | 785  | 385  |
| QUAR      | 120-46 | 1105 | 385  |
| QUAR      | 120-54 | 1105 | 465  |
| QUAR      | 150-30 | 1425 | 225  |
| QUAR      | 150-46 | 1425 | 385  |
| QUAR      | 150-54 | 1425 | 465  |
| QUAR      | 150-62 | 1425 | 545  |
| QUAR      | 180-30 | 1745 | 225  |
| QUAR      | 180-46 | 1745 | 385  |
| QUAR      | 180-54 | 1745 | 465  |
| QUAR      | 180-62 | 1745 | 545  |
| QUAR      | 180-70 | 1745 | 625  |
| QUAR PLUS | 150-54 | 1450 | 460  |
| QUAR PLUS | 150-62 | 1450 | 540  |
| QUAR PLUS | 180-54 | 1740 | 460  |
| QUAR PLUS | 180-62 | 1740 | 540  |
| QUAR PLUS | 180-70 | 1740 | 620  |
|           | a=40   | b=80 | c=80 |



| Mod. ROMÉ (n°4 EOS) |        | hi    | Li    |
|---------------------|--------|-------|-------|
|                     |        | mm    | mm    |
| ROMÉ                | 80-27  | 690   | 77    |
| ROMÉ                | 80-44  | 690   | 251   |
| ROMÉ                | 80-53  | 690   | 338   |
| ROMÉ                | 130-27 | 1190  | 77    |
| ROMÉ                | 130-44 | 1190  | 251   |
| ROMÉ                | 130-53 | 1190  | 338   |
| ROMÉ                | 180-27 | 1690  | 77    |
| ROMÉ                | 180-44 | 1690  | 251   |
| ROMÉ                | 180-53 | 1690  | 338   |
| ROMÉ                | 180-62 | 1690  | 425   |
|                     | a=90   | b=110 | c=110 |

| Mod. SHAR |        | hi   | Li   |
|-----------|--------|------|------|
|           |        | mm   | mm   |
| SHAR      | 70-45  | 661  | 320  |
| SHAR      | 70-50  | 661  | 370  |
| SHAR      | 70-60  | 661  | 470  |
| SHAR      | 70-75  | 661  | 620  |
| SHAR      | 110-45 | 1046 | 320  |
| SHAR      | 110-50 | 1046 | 370  |
| SHAR      | 110-60 | 1046 | 470  |
| SHAR      | 140-33 | 1348 | 200  |
| SHAR      | 140-45 | 1348 | 320  |
| SHAR      | 140-50 | 1348 | 370  |
| SHAR      | 140-60 | 1348 | 470  |
| SHAR      | 180-33 | 1761 | 200  |
| SHAR      | 180-45 | 1761 | 320  |
| SHAR      | 180-50 | 1761 | 370  |
| SHAR      | 180-60 | 1761 | 470  |
| SHAR      | 180-75 | 1761 | 620  |
| SHAR      | 180-90 | 1761 | 770  |
|           | a=65   | b=54 | c=56 |



| Mod. TRAP |                   | hi    | Li    |
|-----------|-------------------|-------|-------|
|           |                   | mm    | mm    |
| TRAP      | 105-65            | 1380  | 240   |
| TRAP      | 170-75            | 1380  | 240   |
|           | c=255 (solo h170) | a=135 | b=310 |

| Mod. VINCI |        | hi     | Li  |
|------------|--------|--------|-----|
|            |        | mm     | mm  |
| VINCI      | 70-80  | 560    | 480 |
| VINCI      | 90-100 | 690    | 630 |
| VINCI*     | 170-60 | 1540   | 400 |
|            | c=172  | c*=420 |     |

| Mod. SLIDE |        | hi   | Li   |
|------------|--------|------|------|
|            |        | mm   | mm   |
| SLIDE      | 48-128 | 400  | 880  |
| SLIDE      | 62-152 | 540  | 1120 |
| SLIDE      | 136-50 | 840  | 320  |
| SLIDE      | 180-50 | 1240 | 360  |
|            | a=40   | b=80 | c=80 |

| Mod. SO-FLEX |        | hi    | Li    |
|--------------|--------|-------|-------|
|              |        | mm    | mm    |
| SO-FLEX      | 77-80  | 705   | 680   |
| SO-FLEX      | 77-120 | 705   | 1080  |
|              | a=60   | b=65  | c=40  |
| SO-FLEX      | 130-49 | 1170  | 350   |
| SO-FLEX      | 130-63 | 1170  | 490   |
| SO-FLEX      | 180-49 | 1670  | 350   |
| SO-FLEX      | 180-63 | 1670  | 490   |
| SO-FLEX      | 133-50 | 1200  | 360   |
|              | a=70   | b=130 | c=130 |

| Mod. START, ST-CURVO |                      | hi   | Li   |
|----------------------|----------------------|------|------|
|                      |                      | mm   | mm   |
| START                | 75-45                | 700  | 350  |
| START                | 75-55                | 700  | 450  |
| START                | 75-70                | 700  | 600  |
| START                | 90-45                | 850  | 800  |
| START                | 90-55                | 850  | 450  |
| START                | 90-60                | 850  | 500  |
| START                | 120-45               | 1150 | 350  |
| START                | 120-55               | 1150 | 450  |
| START                | 120-60               | 1150 | 500  |
| START                | 150-35               | 1450 | 250  |
| START                | 150-45               | 1450 | 350  |
| START                | 150-55               | 1450 | 450  |
| START                | 150-60               | 1450 | 500  |
| START                | 150-70               | 1450 | 600  |
| START                | 180-35               | 1750 | 250  |
| START                | 180-45               | 1750 | 350  |
| START                | 180-55               | 1750 | 450  |
| START                | 180-60               | 1750 | 500  |
| START                | 180-70               | 1750 | 600  |
|                      | a=45 (ST-Curvo a=50) | b=50 | c=97 |

| Mod. THUN |        | hi   | Li   |
|-----------|--------|------|------|
|           |        | mm   | mm   |
| THUN      | 100-50 | 960  | 310  |
| THUN      | 140-50 | 1373 | 310  |
| THUN      | 180-50 | 1785 | 310  |
|           | a=95   | b=57 | c=57 |

| Mod. THUN MULTI |        | hi   | Li   |
|-----------------|--------|------|------|
|                 |        | mm   | mm   |
| THUN 2          | 55-97  | 960  | 310  |
| THUN 2          | 55-130 | 1373 | 310  |
| THUN 3          | 55-144 | 1785 | 310  |
| THUN 2          | 66-97  | 960  | 310  |
| THUN 2          | 66-130 | 1373 | 310  |
| THUN 3          | 66-144 | 1785 | 310  |
| THUN 2          | 80-97  | 960  | 310  |
| THUN 2          | 80-130 | 1373 | 310  |
|                 | a=95   | b=57 | c=57 |

| Mod. VISION - VISION ST |        | hi   | Li   |
|-------------------------|--------|------|------|
|                         |        | mm   | mm   |
| VISION                  | 48-48  | 410  | 340  |
| VISION                  | 56-56  | 490  | 420  |
| VISION                  | 64-64  | 570  | 500  |
| VISION                  | 48-80  | 410  | 660  |
| VISION                  | 56-96  | 490  | 820  |
| VISION                  | 64-112 | 570  | 980  |
| VISION ST               | 80-48  | 710  | 340  |
| VISION ST               | 96-56  | 890  | 420  |
| VISION ST               | 128-48 | 1210 | 340  |
| VISION ST               | 128-56 | 1210 | 420  |
| VISION ST               | 176-40 | 1690 | 260  |
| VISION ST               | 176-48 | 1690 | 340  |
| VISION ST               | 176-56 | 1690 | 420  |
|                         | a=70   | b=70 | c=70 |

| Mod. ZOOM (n°4 M4S) |       | hi   | Li   |
|---------------------|-------|------|------|
|                     |       | mm   | mm   |
| ZOOM                | 56-56 | 483  | 480  |
| ZOOM                | 75-75 | 673  | 670  |
| ZOOM                | 90-90 | 823  | 820  |
|                     | a=40  | b=77 | c=40 |